



BioSoft Integrators

**TRACK
ANALYZE
CODE**

“Your Lab, Your Way.”

We work with you and your stakeholders to identify the needs of your organization and implement user and system requirements that match your exact needs profile.

TRACK

LabOptimize™ LIMS

BioSoft Integrators offers a comprehensive solution to address tracking, process security, analysis and reporting of data with **flexibility, scalability and thorough and complete documentation.**

BioSoft Integrators builds the **informatics backbone in life science laboratories** so our customers can focus on their mission – the endless possibilities of science.

Why should BioSoft Integrators be your LIMS partner?

We are a leading provider of neutral laboratory tracking solutions with extensive expertise in all application areas of life science.

APPLICATIONS

Best Practice Solutions

SOFTWARE DEVELOPMENT

Tailored to Your Needs

WORKFLOW UI

User Guided Interfaces

SUPPORT

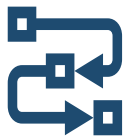
Universal Code Base

INTEGRATION & AUTOMATION

Connectivity and Tracking of the complete lab process ensures optimal efficiency and reliable reported results



SYSTEMS



PROCESSES



INSTRUMENTS



RESULTS

Faster implementation

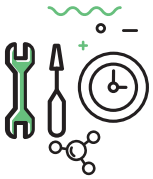
Easily customized to match your lab's workflow

Intuitive and logical interface reduces customization expense

Lower investment to implement a LIMS

Complete workflow integration - Sample, Inventory & Materials Management, CRM, ERP, etc.

AN HPC **DESIGNED** FOR GENOMIC ANALYSIS



**TURNKEY
APPLIANCE**



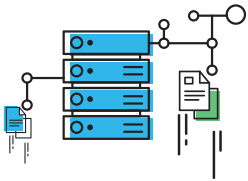
**SUPERIOR
HPC SUPPORT**



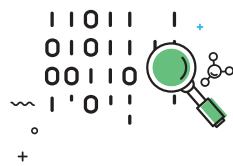
**WHITE GLOVE
INSTALLATION**



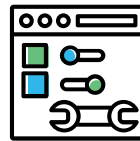
**LOWER COST
THAN CLOUD
OPTIONS**



**DESIGNED
FOR SPEED**



**MAXIMUM
RELIABILITY**



**PRE-CONFIGURED
ANALYSIS
INTEGRATION**



**SECURITY IN HAVING A
LOCAL INSTALLATION
WITHOUT CYBER RISKS**

The system is tuned specifically for multiple high throughput sequence analysis workflows. Whether you're using Illumina, PacBio or another sequencing technology, this system is right for you. Our HPCs are pre-loaded with all open-source analysis packages so when the system arrives, you are processing samples a few hours after installation.

NGS Technology relies on having enough power and storage to perform large scale genomic processing. Our HPC solutions are turnkey appliances configured specifically for today's & tomorrow's sequencing needs.

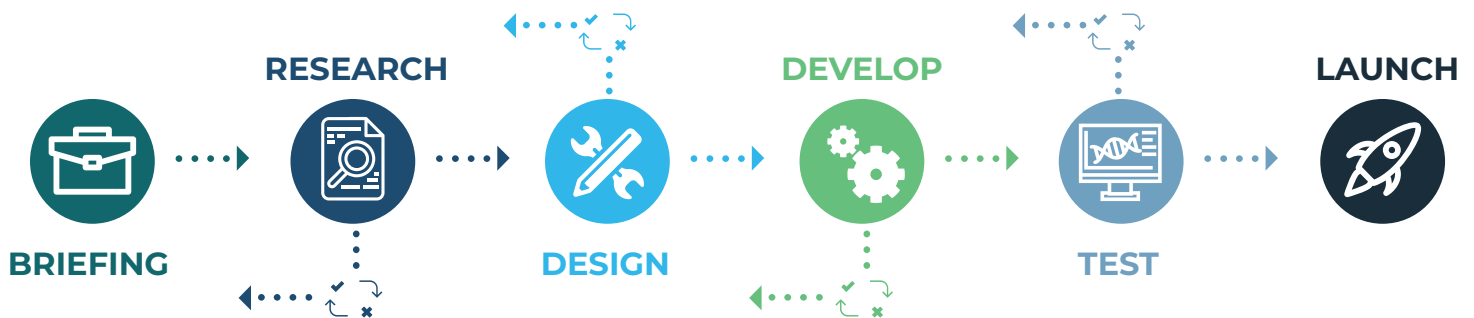
BioSoft Integrators offers high performance servers and modular storage products. **Our HPCs** conserve your IT resources by being remotely supported by our staff, who are experts in computing needs for NGS. **A BioSoft Integrators HPC can be quickly and easily added to or reconfigured so your lab** can keep pace with changes to your computing needs with virtually no system down-time.

Our **expertise in connectivity** and our three decades of experience in laboratory applications offers our clients a unique partner in developing software.

AGILE DEVELOPMENT PROCESS

Our development is done using the Agile Development Model

This is what our iterative development journey looks like when partnering with BioSoft Integrators:



↺ ↻ ✖ Continual verification during development ensures deliverables align with requirements

Advantages of using our Agile Development Model:

- Interpretation is continually checked and verified before and during development.
- Development deliverables can be implemented along the way instead of at the end of the project.
- Because development is being verified, new features and options can be caught during development so that the end product provides a better solution than what could originally be defined.

AREAS OF EXPERTISE

Adherence to a defined SOP can be guaranteed with guided work instructions, traceability and tailored analysis. Whether your lab is processing samples manually or automated, BioSoft Integrators can guide your technicians and track the process, beginning to end.

COMPREHENSIVE OFFERING

BioSoft Integrators has a full range of solutions and services to meet the needs of your lab or manufacturing facility. Our **High Performance Computing (HPC) Systems**, **LabOptimize™ solution** (Laboratory Information Management System or LIMS) and our **expert Software Development** team enables today's labs to accelerate discoveries with breakthrough science.