



**BioSoft** Integrators

**Genomic  
Analysis**

# **HPC** HIGH PERFORMANCE COMPUTING SOLUTIONS

An HPC Designed For Genomic Analysis

Turnkey Solution,  
Ready for Immediate Use

Proven Performance

Analysis Integration  
Supported

Best Value Available



The system is tuned specifically for multiple high throughput sequence analysis workflows. Whether you're using Illumina, PacBio or another sequencing technology, this system is right for you. Our HPCs are pre-loaded with all open-source analysis packages so when the system arrives, you are processing samples a few hours after installation.

## AN HPC **DESIGNED** FOR GENOMIC ANALYSIS



**TURNKEY  
APPLIANCE**



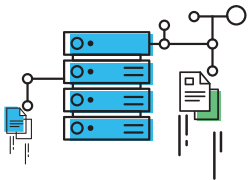
**SUPERIOR  
HPC SUPPORT**



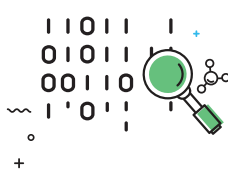
**WHITE GLOVE  
INSTALLATION**



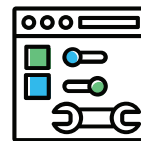
**LOWER COST  
THAN CLOUD  
OPTIONS**



**DESIGNED  
FOR SPEED**



**MAXIMUM  
RELIABILITY**



**PRE-CONFIGURED  
ANALYSIS  
INTEGRATION**



**SECURITY IN HAVING A  
LOCAL INSTALLATION  
WITHOUT CYBER RISKS**

BioSoft Integrators offers high performance servers and modular storage products. **Our HPCs are** Our solution conserves your IT resources by being remotely supported by our staff, who are experts in computing needs for NGS. **A BioSoft Integrators HPC can be quickly and easily added to or reconfigured so your lab** can keep pace with changes to your computing needs with virtually no system down-time.

**NGS Technology** relies on having enough power and storage to perform large scale genomic processing. Our HPC solutions are turnkey appliances configured specifically for today's & tomorrow's sequencing needs.

# HPC High Performance Computing System Options

Specs	Platinum	Gold	Silver
Total Number of Cores	288	192	96
Total RAM (GB)	3072	2048	1024
Head Node Cores (Qty)	24	24	24
Head Node RAM (GB)	256	256	256
Compute Nodes (Qty)	11	7	3
Compute Cores (per Node)	24	24	24
Compute RAM (per Node, GB)	256	256	256
Head Node Storage (TB)	40	40	40
Total Compute Storage (TB)	64	56	48
Compute Storage (per Node, TB)	2	2	2
Total Scratch / Data Space (GB)	12	8	4
Scratch / Data Space (per Node, GB)	1	1	2
48 Port 10 GigE Switch and Network Cables Included	Yes	Yes	Yes
48 Port 10/100 Switch and Network Cables Include	Yes	Yes	Yes
KVM	Virtual	Virtual	Virtual
PDU Output	8	8	8
Maintenance Kit	Yes	Yes	Yes
Rack Enclosure	42 U	42 U	15 U
Pre-tested for burn-in to ensure reliability in the field.	Yes	Yes	Yes
Pre-Installed NGS Analysis Software	Yes	Yes	Yes
White Glove Install	Yes	Yes	Yes
Remote Cluster Support	12 Months	12 Months	12 Months
Hardware Warranty	3 Years	3 Years	3 Years

# The BioSoft Advantage

Don't pay for what you don't need. Get the right setup for your organization at a price that's right for your budget.



Laboratory processes are second nature to us. Our **LabOptimize LIMS is an industry leading laboratory tracking system designed to integrate all aspects of a company's workflow** from sales to inventory management and procurement, with the actual sample handling being one part of the overall process.

**Our expertise in connectivity and our three decades of experience in laboratory applications** offers our clients a unique partner in developing software. When looking for software support in all areas of life science, contact BioSoft Integrators.



## Support Services

BioSoft Integrators is with you every step of the way from installation and training through troubleshooting and system optimization



## Scalable Simplicity

The built-in ability to upgrade processor cores and storage space provides maximum flexibility and platform evolution capabilities as needs grow and change



## Custom Integration

Streamline your operations by letting us integrate your third-party analysis packages and harmonize your data storage and analysis

# “Your Lab, Your Way.”

We work with you and your stakeholders to identify the needs of your organization and implement user and system requirements that match your exact needs profile.



## Contact Us Today

info@biosoftintegrators.com  
www.biosoftintegrators.com  
+1 (619) 793 - 5095

